

ECOSOFT MO12000 4" REVERSE OSMOSIS SYSTEM FOR BRACKISH WATER

APPLICATIONS

Process water, rinse water, steam boilers, heating and cooling circuits, agriculture, desalination, food and beverage, utility water treatment.

EQUIPMENT

- Grundfos® CRN 1-30 high pressure pump
- 450 psi membrane housing
- Ecosoft controller OC6000
- Purified water conductivity probe
- Electrical inlet valve
- Regulating needle valves
- AISI 304 Stainless steel frame
- AISI 316 Stainless steel piping

OPTION

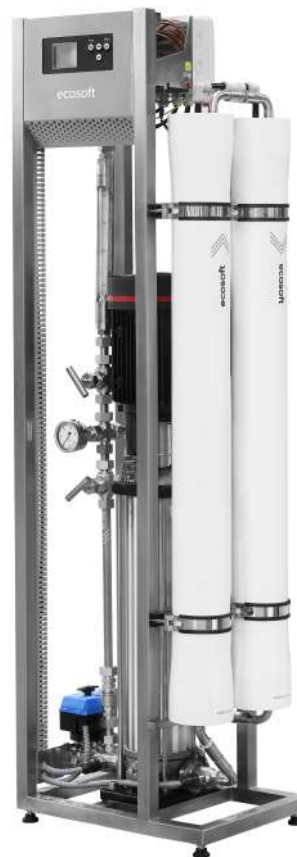
- High rejection Filmtec™ membrane: LC LE PRO-4040
- High rejection LG™ membrane: LG BW 4040 ES

TECHNICAL SPECIFICATION

Permeate capacity ¹	500 L/h
Permeate recovery ²	depends on feed water TDS
Maximum TDS	10 000 mg/L (10 g/L)
Influent flow demand	800...1600 L/h (service)
Operating pressure	15...20 bar
Maximum pressure	25 bar
Electrical requirements	230 V, 50 Hz (1 ph)
Electrical power	1.6 kW

¹ depends on feed water TDS, temperature, and permeate recovery — see graph on the right

² for low scaling/fouling water



Ecosoft reserves the right to amend the product's system architecture provided that its functionality and usability will not deteriorate

CONNECTION PORT SIZES

Influent water	G ¾"
Permeate	G ½"
Concentrate	G ½"

Approximate weight

Bare system	110 kg
Crated system	140 kg
Dimensions (Width × Depth × Height)	
Bare system	490 × 340 × 1625 mm
Crated system	500 × 400 × 1750 mm

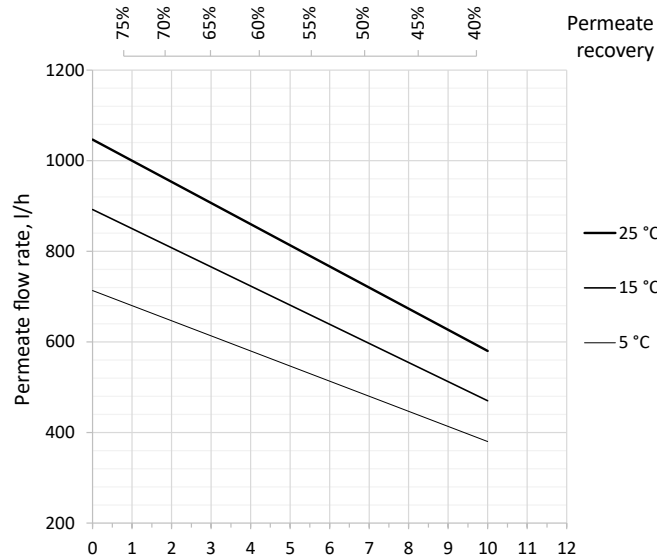
ECOSOFT MO6500 4" REVERSE OSMOSIS SYSTEM FOR BRACKISH WATER

Code	Product	Flow capacity, L/h (GPH)	Membranes*
MO12000BI6	Ecosoft MO12000 BWRO System	400–600 (100–150)	2/40 x 40

* the system is shipped without a membrane

** dimensions may vary ± 5%

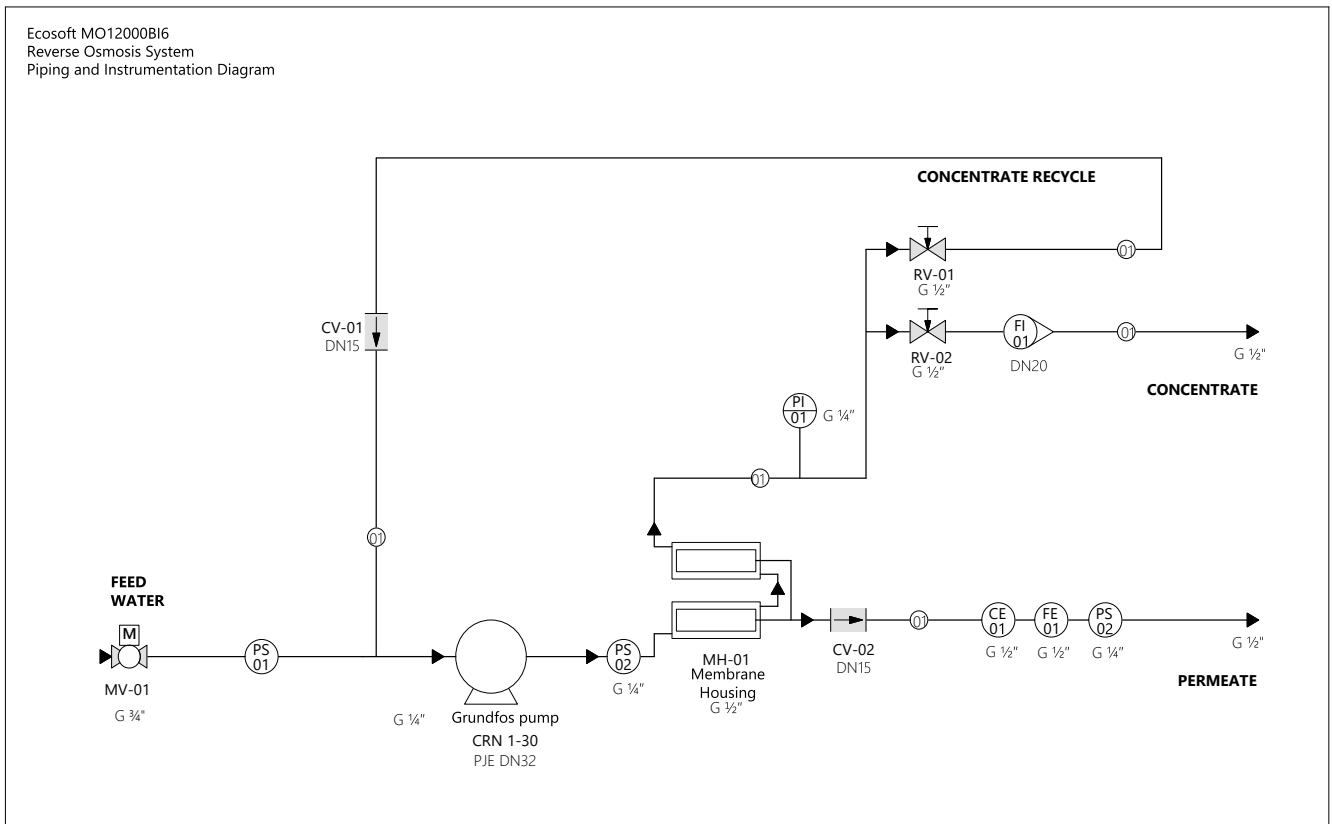
ECOSOFT MO12000 INOX RO FLOW CAPACITY GRAPH (WITH LCLE-4040 MEMBRANES)



Permeate flow rates are calculated under the following conditions:

- 4 bar influent water pressure
- 0 bar backpressure in the permeate line
- fresh membranes

PIPES AND INSTRUMENTS DIAGRAM



PIPES AND CONNECTIONS	VALVES	INSTRUMENTS
Stainless steel pipe DN15 G parallel BSPT thread PJE coupling	Motorized Valve Needle Valve Check Valve	Pressure gauge Conductivity probe (process mount) Pressure switch Flow meter (process mount) Rotameter

SYSTEM DIMENSIONS



Figure 3.1 Dimensions of bare system

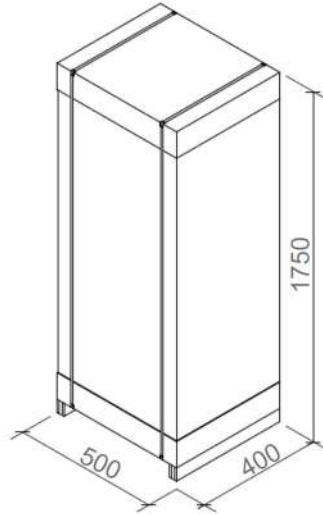


Figure 3.2 Dimensions of crate

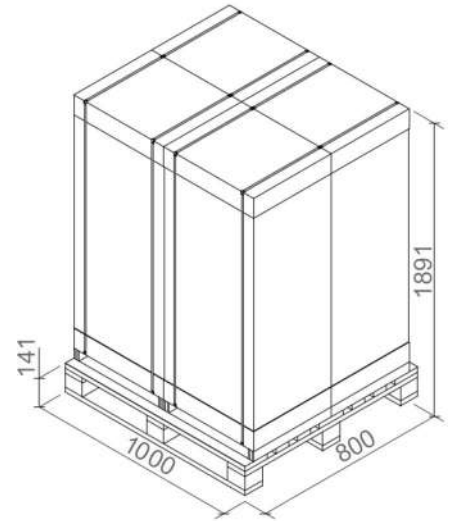


Figure 3.3 Dimensions on pallet